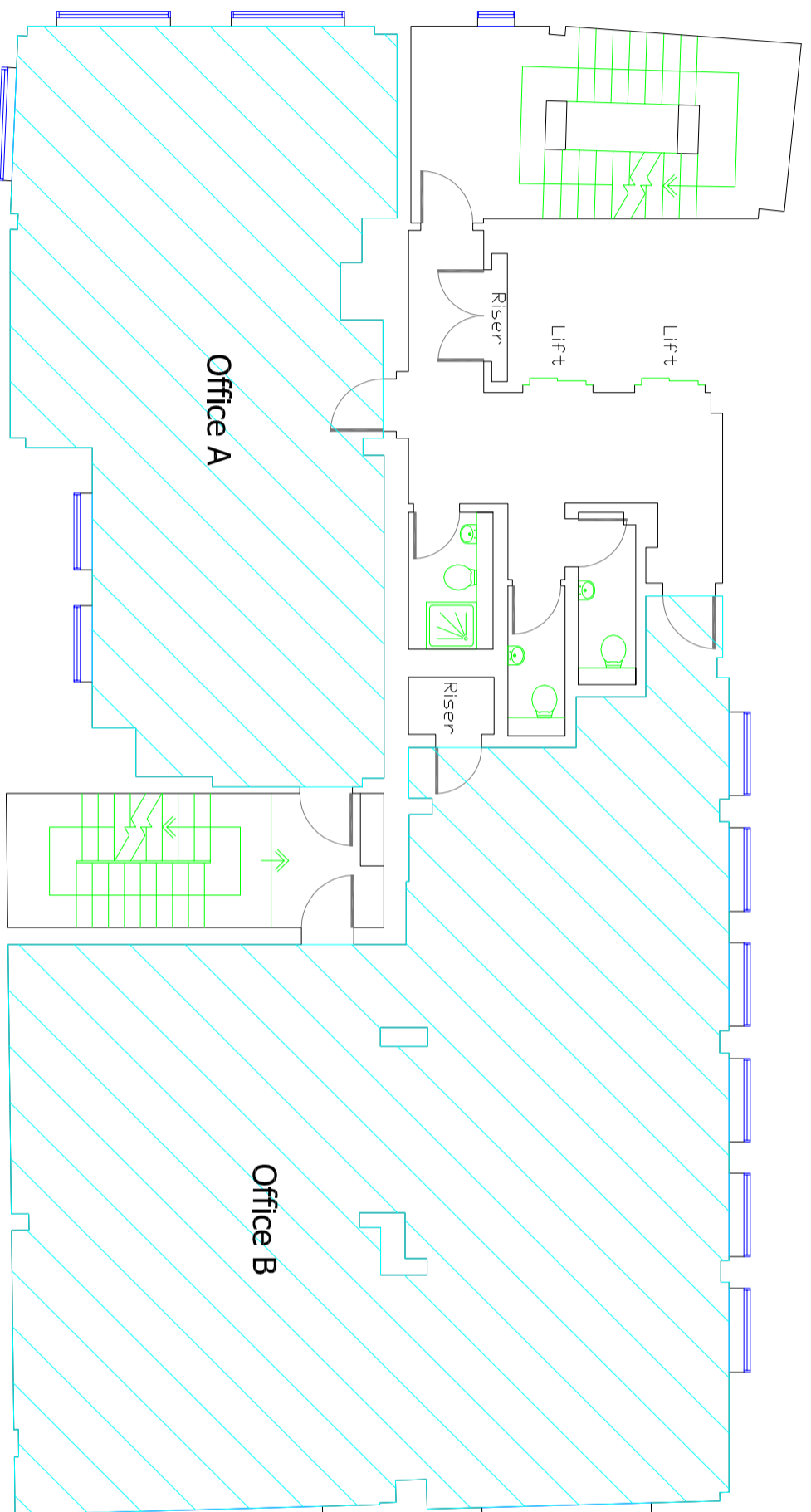


NIA Areas Fourth Floor

Office A = 63.5 Sq Meters
683 Sq Feet

Office B = 121.1 Sq Meters
1303 Sq Feet

Total Area = 184.6 Sq Meters
1986 Sq Feet



0 1 2 3 4 5 metres

Key

Project
Ingleby Trice
60-61 Cheapside
London
EC2V 6AX

Drawing Title Fourth Floor Plan
& Areas

Drawing Ref 2891-04NIA

Scale 1:100 on A3

Date January 2018

Notes & Revisions

Ross Laird measured surveys
Ross Laird Limited
5 Lower King Street
Royston, Herts SG8 5AL
Tel : 01763 249949
e-mail : surveys@rosslaird.co.uk
www.rosslaird.co.uk

ALL DIMENSIONS TAKEN TO FACE
IF APPLICABLE OR WALL OUTLINE
ALTHOUGH EVERY EFFORT IS MADE TO PRODUCE AN
ACCURATE DRAWING, THE DRAWING IS NOT TO BE
CONSIDERED AS A GUARANTEE OF ACCURACY AND
SUSCEPTIBLE AREAS WILL BE SHOWN USING A BRICK