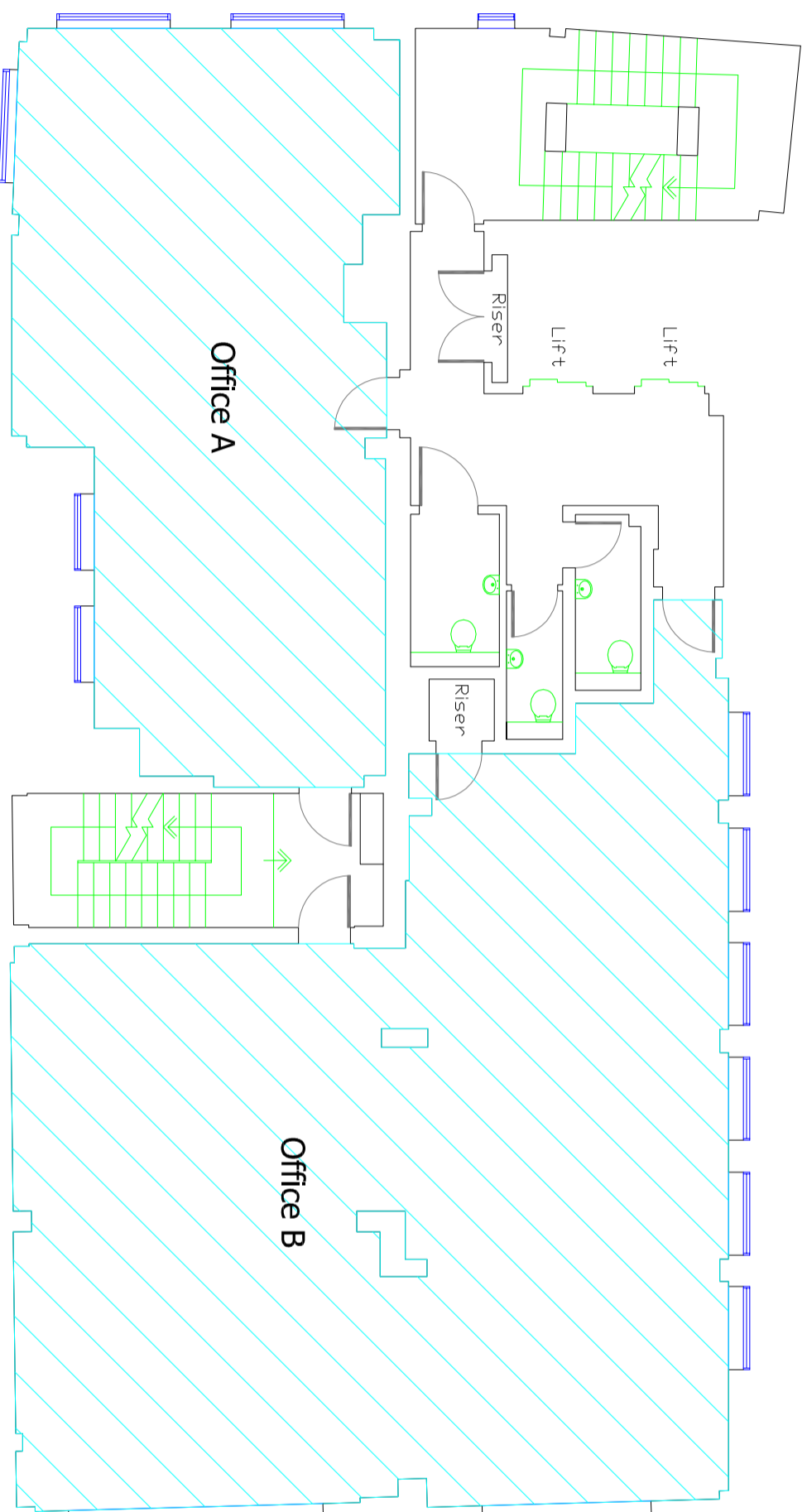


NIA Areas Third Floor

Office A = 63.6 Sq Meters
684 Sq Feet

Office B = 120.2 Sq Meters
1294 Sq Feet

Total Area = 183.8 Sq Meters
1978 Sq Feet



0 1 2 3 4 5 metres

Key

Project
Ingleby Trice
60-61 Cheapside
London
EC2V 6AX

Drawing Title Third Floor Plan
& Areas

Drawing Ref 2891-03ANIA

Scale 1:100 on A3

Date January 2018

Notes & Revisions

Ross Laird measured surveys
Ross Laird Limited
5 Lower King Street
Royston, Herts SG8 5AL
Tel : 01763 249949
e-mail : surveys@rosslaird.co.uk
www.rosslaird.co.uk

ALL DIMENSIONS TAKEN TO FACE
IF APPLICABLE OR WALL CENTRE
ALTHOUGH ENTRY DIMENSIONS IS USED TO PROVIDE AN
OPTIMAL VIEWING OF DRAWING IF REQUIRED ON SITE
UNLESS OTHERWISE SPECIFIED ALL DIMENSIONS ARE IN METRES
UNLESS OTHERWISE SPECIFIED ALL DIMENSIONS ARE IN METRES
UNLESS OTHERWISE SPECIFIED ALL DIMENSIONS ARE IN METRES