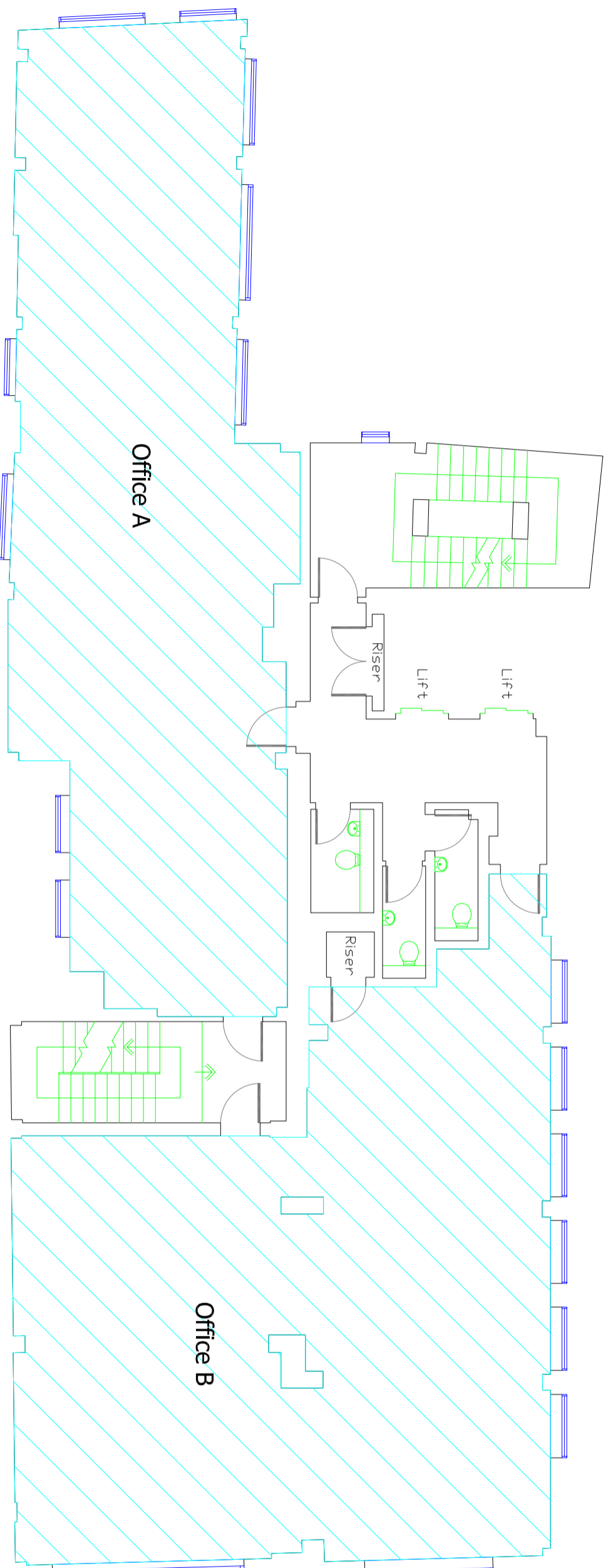


NIA Areas Second Floor

Office A = 104.6 Sq Meters  
1126 Sq Feet

Office B = 119.8 Sq Meters  
1289 Sq Feet

Total Area = 224.4 Sq Meters  
2415 Sq Feet



0 1 2 3 4 5 metres

Key

Project  
Ingleby Thice  
60-61 Cheapside  
London  
EC2V 6AX

Drawing Title  
Second Floor Plan  
& Areas

Drawing Ref  
2891-02ANIA

Scale  
1:100 on A3

Date  
January 2018

Notes & Revisions

**Ross Laird** measured surveys  
Ross Laird Limited  
5 Lower King Street  
Royston, Herts SG8 5AL  
Tel : 01763 249949  
e-mail : surveys@rosslaird.co.uk  
www.rosslaird.co.uk

ALL DIMENSIONS TAKEN TO FACE  
OF APPLICABLE OR WALL COORDINATE  
ALTHOUGH ENTRY DIMENSIONS IS MADE TO PROPERTY, ANY  
ORIGINAL DIMENSIONS SHOWN IN RECORD OR DRAWING  
SUPERSEDES THESE AND WILL BE SHOWN USING A BRICKEN  
LINE