

AVAILABLE TO LET

7 Birchin Lane

7 Birchin Lane, London EC3V 9BW

INGLEBY
TRICE **allsop**

Office for rent, 2,891 sq ft, £62.50 psf (Quoting)

For more information visit <https://realla.co/m/1181-7-birchin-lane-7-birchin-lane>

Veronika Sillitoe
v.sillitoe@inglebytrice.co.uk

Rachel Lockhart
rachel.lockhart@allsop.co.uk

7 Birchin Lane

7 Birchin Lane, London EC3V 9BW

7 Birchin Lane has been transformed into a sophisticated office building, providing high-class office accommodation in the heart of the City of London.

7 Birchin Lane is one of the latest refurbishments by BMO Real Estate Partners.

The 2nd floor has been partially fitted out to provide a future occupier a cost effective and efficient solution. The 2nd floor also benefits from a live fibre optic connection ready for use day 1.

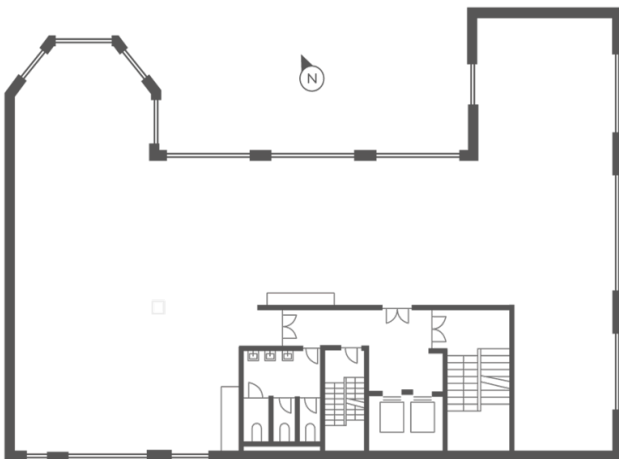
Birchin Lane has been recently pedestrianised and resurfaced with granite paving complementing the rich historic feel of the area.

Highlights

- High quality refurbished offices - 2nd floor benefits from a partial fit out
- Kitchenette with high level seating
- Live fibre optic connection has been installed to the 2nd floor
- Remodelled reception with a commissionaire
- City core location within 100 metres from Bank station
- New metal tile raised floors
- New showers and bicycle storage
- VRV air conditioning
- Two passenger lifts
- LED contemporary feature lighting

Property details

Rent	£62.50 psf (Quoting)
Est. S/C	£10.92 psf
S/C Details	per sq. ft pa (to 09/18)
Est. rates payable	£23.86 psf
Size	2,891 sq ft
VAT charges	Payable.
EPC certificate	Available on request



More information

<https://realla.co/m/1181-7-birchin-lane-7-birchin-lane>

Veronika Sillitoe
Ingleby Trice
☎ 020 7029 3610
✉ v.sillitoe@inglebytrice.co.uk

Rachel Lockhart
Allsop
☎ +44 (0)20 7588 4433
✉ rachel.lockhart@allsop.co.uk

Mark Brown
Ingleby Trice
☎ 0207 029 3610
✉ m.brown@inglebytrice.co.uk

Steve Lydon
Allsop
☎ +44 (0)20 7588 4433
✉ steve.lydon@allsop.co.uk

By prior arrangement.